

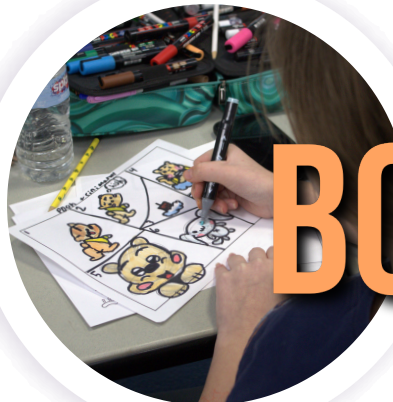


Boone County
4-H Youth Development
September
Newsletter

 Cooperative
Extension Service
Boone County

Cooperative Extension Service
Boone County
6028 Camp Ernst Rd
P.O. Box 876
Burlington, KY 41005-0876
(859) 586-6101
boone.ext@uky.edu
boone.ca.uky.edu

2025



BOONE COUNTY 4-H

Open House

4-H IS FOR AGES 9-18



Sunday, September 21, 2025



1:00 - 3:00 PM, Stop in anytime



Boone County Extension Florence
7111 Dixie Highway
Florence, KY 41042

This event is open to new and returning 4-H members and their families!

Learn about the benefits of 4-H, our programs, activities and year-long clubs; Sharpshooters, Animal Clubs, Rollerskate Club, Horse Clubs, Art & Design Clubs, Teen Club, Disc Golf, and more!

There is chance to win one of the following:

- 1 week of 4-H camp
- 1 week of Teen Conference
- Cloverbud giftbag



ANNOUNCEMENT

2026 4-H Enrollment Opens September 1, 2025

2025 enrollment expires on August 31st. To continue being an active member, receive monthly newsletters, participate in 4-H events and the Boone County Fair as a 4-H member, you **MUST** re-enroll by completing the 2026 enrollment form.



Sharpshooters

Sharpshooters will begin accepting applications for the 2026 season starting September 1, 2025.

Your child may join archery, firearms, or both. We train children how to safely and responsibly use archery bows, .22 caliber rifles and handguns, and 12 and 20 gauge shotguns. Our club provides all equipment and ammunition for the season for your child for one low price.

Email Debra at bc4hsharpshooter@gmail.com with any questions.

The Sharpshooters Open House will be held on December 4, 2025. See flyer towards the end of this newsletter for more information.

Congratulations to the following:

Montgomery County Invitational

Blake Hicks, 2nd place recurve individual
1st place team compound bare bow
Blake Hicks
Violet Lageman
Sebastian Locklear
Josh Richardson

Rowan County Invitational

Blake Hicks, 2nd place compound
Josh Richardson, 3rd place compound

Spencer County Invitational

Hayden Bittlinger, 3rd place compound

Northern Kentucky Invitational

Lucas Newport -1st place bare recurve
Charlie Schneckenberger-1st place compound bare & 2nd place sporting rifle
Mataya Schneckenberger-2nd place compound bare

Bracken County Invitational

Robby Parrish-2nd place compound bare
Ivy Bundy-3rd place compound bare
1st place team compound bare bow
Robby Parrish
Ivy Bundy
Hadley Gilliland
Sebastian Locklear

Good luck to our 27 archers headed to our state competitions in September.

Cloverbuds

Cloverbud clubs are for children ages 5-8. Register by calling 859.586.6101 or sign up on our website.

- You must pre-register for each month. (registration opens 30 days prior to class)
- Supplies will be provided.

Lil Buds Club

Wednesday, September 17th: 5:30 - 6:30PM

📍 Boone County Extension Florence

Lego Club

4th Friday of each month: 4:45 - 5:45PM

📍 Location TBD for each meeting

4-H Cloverbud LEGO Club will help young members build, create, and play! This club will explore fine motor skills, creativity, and teamwork through fun LEGO activities designed just for them.

Floral Design Club

Wednesday, September 17th: 6 - 7:30PM

- For advanced or beginner artists.
- Registration required.
- All supplies provided.
- 📍 Boone County Extension Environmental & Nature Center - Barn

Our July meeting was our charity flower arrangement day. All participants made two or more arrangements for the residents of Colonial Heights Senior Living. The picture below show the class with their arrangements.

The 4-H Floral Design Club meets on the 3rd Wednesday of every month, unless otherwise notified.

For additional information contact Marea West, Tel: 859-689-1584 or Email: mareawest@fuse.net.



Hops & Flops

Hop into the world of rabbits—no bunny required! Whether you already have a rabbit or are just curious about these furry friends, this club is the perfect place to learn and explore. Discover fascinating facts about rabbit breeds from around the world, learn proper rabbit care, participate in fun activities and more! Join us as we explore everything rabbit-related in a fun and friendly 4-H environment!

- 3rd Thursday of the Month, 6:30 - 8 PM
- 📍 Location TBD for each meeting

Questions? Contact Lindsay Callahan at lcallahan09@mail.wou.edu

Young Guns

Young Guns is a team of riders who perform choreographed maneuvers to music. Our next performance will be at the Outlaws Drill Team Competition (Kentucky Horse Park) on October 15.

Interested in learning more and becoming part of the team? Contact Joyce Voet at 859.630.4566.



Jr. Master Naturalist

The Junior Master Naturalist (JMN) is a 4-H club for youth ages 9-14 who are interested in nature. Information and activities discussed include soil, birds, bugs, water, mammals, geology, wildflowers, and trees. Registration required.

Monthly (Mondays) September 8th - May 11th

- 5:30 - 7 PM
- Registration required.
- 📍 Boone County Extension Florence

Questions? Contact
Laila El-Amin at 859.586.6101, laila.el-amin@uky.edu
or
Jasper Stevenson at jasper.stevenson@uky.edu

Horse Sense

We are a horse enthusiasts club that discusses horse-related educational topics. You do not need a horse in order to join.

Upcoming meeting dates:

September 23rd and October 14th 6:30 - 7:30 PM
Boone County Extension Office

Questions? Contact Ashley at ashley.englandhuff@gmail.com



Kreative Kids Club

Kreative Kids is a new Boone Co. 4-H club that helps explore your artistic side through various arts and crafts. During our first meeting, we will be making friendship bracelets as we kick off this new club and make new friends!

Wednesday, September 24th: 5 - 6 PM

- Registration required.
- All supplies provided.
- 📍 Boone County Extension Office

Questions? Contact Sandy at bc4hkreativekids@gmail.com

Cat Club

The cat club will have its first meeting for the school year on September 10th.

This year, we will be "cat vets" - learning about important factors that affect cats' health, how to care for cats, and about veterinary careers.

Anyone 9 or older who loves cats is welcome to join. There is no requirement to own a cat.

Wednesday, September 10th: 5-6 PM

- 📍 Boone County Extension Office

Questions? Contact bc4hcatclub@gmail.com

Sew Unique Design Club

Learn the basics of sewing and pattern making with a machine. No prior sewing experience needed. All supplies provided. We will be starting our Learn-to-Sew series of classes for beginner sewers ages 9-18, with our October 20th meeting.

- 3rd Thursday of the Month, beginning October 2025
- 📍 Where: Location TBD for each meeting

Questions?
Contact Debra Feitl at b4hdesignclub@gmail.com



Cooperative
Extension Service
Boone County

| 4-H YOUTH DEVELOPMENT

Dance Fitness

**Get ready to move, groove, and have a blast
in our Dance Fitness class!**

This high-energy class is all about having fun,
dancing to great music, and staying active with
friends. No dance experience required, just bring
your enthusiasm and get ready to enjoy the beat!



BOONE COUNTY EXTENSION FLORENCE
7111 Dixie Highway, Florence KY 41042



TUESDAYS, 6:30 - 7:30 PM

September 9, 2025

October 14, 2025

November 11, 2025

February 10, 2026

March 10, 2026

April 14, 2026



REGISTRATION REQUIRED. MUST BE A 4-H MEMBER.

Register online at boone.ca.uky.edu

Questions? Email Laila.El-Amin@uky.edu

This class is open to 4-H members and their parent or adult guardian. For safety reasons, younger siblings and non-4-H members are not permitted in this class.

Cooperative
Extension Service

Agriculture and Natural Resources
Family and Consumer Sciences
4-H Youth Development
Community and Economic Development

MARTIN-GATTON COLLEGE OF AGRICULTURE, FOOD AND ENVIRONMENT

Educational programs of Kentucky Cooperative Extension serve all people regardless of economic or social status and will not discriminate on the basis of race, color, ethnic origin, national origin, creed, religion, political belief, sex, sexual orientation, gender identity, gender expression, pregnancy, marital status, genetic information, age, veteran status, physical or mental disability or reprisal or retaliation for prior civil rights activity. Reasonable accommodation of disability may be available with prior notice. Program information may be available in languages other than English.
University of Kentucky, Kentucky State University, U.S. Department of Agriculture, and Kentucky Counties, Cooperating
Lexington, KY 40506



Disabilities
accommodated
with prior notification.

SEPTEMBER WORD SEARCH PUZZLE

AUTUMN
LEAVES
HARVEST

APPLE
SCHOOL
FOOTBALL

EQUINOX
SEPTEMBER
PUMPKIN

ACORN
RAKE
SUNFLOWER

LABOR DAY
CRISP
SWEATER

H	L	I	T	N	U	B	A	R	B	A	L	B	Y	L
X	A	L	E	A	V	E	S	S	C	H	O	O	L	S
B	B	R	Q	Q	G	S	K	U	T	P	L	R	T	E
X	O	R	V	R	A	K	E	N	Z	U	U	W	Q	P
S	R	T	P	E	J	Y	J	F	P	E	C	V	F	T
M	D	O	F	E	S	A	H	L	K	Q	S	Q	Y	E
W	A	T	O	V	P	T	S	O	I	U	W	B	C	M
E	Y	J	O	S	H	F	P	W	L	I	F	R	R	B
I	R	S	T	H	R	P	P	E	O	N	D	W	I	E
M	T	P	B	G	G	D	W	R	Z	O	W	X	S	R
A	D	W	A	B	B	P	H	L	S	X	C	X	P	H
P	C	Z	L	S	U	A	U	T	U	M	N	Q	B	A
P	Y	O	L	Q	F	E	F	M	B	P	L	K	I	O
L	C	L	R	D	I	P	O	I	P	O	L	Q	R	Z
E	G	W	M	N	Q	W	X	T	Y	K	Z	E	G	F
S	W	E	A	T	E	R	G	T	S	R	I	B	G	Q
Q	Z	W	Q	R	U	Z	J	E	L	B	P	N	J	G
Q	Z	H	T	K	T	O	Q	J	P	X	F	Y	B	W

KID APPROVED RECIPE



Apple Berry Salsa with Cinnamon Chips

Ingredients:

- 1 medium granny smith apple
- 3/4 cup strawberries
- 1 small orange
- 1/2 can crushed pineapple
- 1/2 tablespoon brown sugar
- 1 tablespoon orange juice
- *12 (8-inch) fat free tortillas
- *2 teaspoons cinnamon
- *1/4 cup sugar
- *Vegetable cooking spray

Directions:

Apple Berry Salsa

1. Wash, core, and dice apple, with peel.
2. Wash, hull, and dice strawberries.
3. Wash, peel, and dice orange.
4. Pour pineapples in a bowl along with the apple, strawberries, and orange. Stir gently.
5. In a small separate bowl, mix orange juice and brown sugar with a fork until combined.
6. Pour over fruit and refrigerate while making cinnamon crisps.



***Cinnamon Chips

1. Preheat oven to 350 degrees.
2. Spray each side of tortillas with vegetable spray.
3. Sprinkle with cinnamon and sugar.
4. Cut into 4 wedges.
5. Place on baking sheet. Bake 10 minutes.

Nutrition Facts Per Serving:

Salsa: 30 calories; 0g total fat; 0g saturated fat; 0g trans fat; 0mg cholesterol; 0mg sodium; 8g carbohydrate; 1g fiber; 7g sugar; 0g protein.
Chips: 150 calories; 3.5g total fat; 1g saturated fat; 0g trans fat; 0mg cholesterol; 320mg sodium; 27g carbohydrate; 0g fiber; 4g sugar; 4g protein.

Source: Eat Smart to Play Hard : University of Kentucky Cooperative Extension Service, Nutrition Education Program

PASSPORT KITCHEN

Boone County 4-H is teaming up with Boone County Public Library to present a program called Passport Kitchen for youth in grades 3rd through 5th.

Each month, we will travel to a different country and explore the foods of that culture.



BOONE COUNTY EXTENSION FLORENCE

7111 Dixie Highway, Florence KY 41042



TUESDAYS, 4:30 - 6 PM

September 9, 2025
October 14, 2025
November 11, 2025
February 10, 2026
March 10, 2026
April 14, 2026



REGISTRATION REQUIRED.

Register through the Boone County Public Library Event page at <https://www.bcpl.org/>

Questions? Email Laila.El-Amin@uky.edu





BOONE COUNTY 4-H

Sharpshooters

OPEN HOUSE

Don't miss this great opportunity to see what the Boone County 4-H Sharpshooters are all about!

During the Open House, you can:

-  Try your hand at archery
-  Meet our trained and certified coaches
-  Chat with current club members
-  Learn more about our club



4-H IS FOR AGES 9-18



Thursday, December 4, 2025



5:00 - 7:00 PM, Stop in anytime



Boone County Extension, Florence
7111 Dixie Highway
Florence KY 41042



Register by contacting Debra Feitl:
bc4hsharpshooter@gmail.com

Cooperative
Extension Service

Agriculture and Natural Resources
Family and Consumer Sciences
4-H Youth Development
Community and Economic Development

MARTIN-GATTON COLLEGE OF AGRICULTURE, FOOD AND ENVIRONMENT


Educational programs of Kentucky Cooperative Extension serve all people regardless of economic or social status and will not discriminate on the basis of race, color, ethnic origin, national origin, creed, religion, political belief, sex, sexual orientation, gender identity, gender expression, pregnancy, marital status, genetic information, age, veteran status, physical or mental disability or reprisal or retaliation for prior civil rights activity. Reasonable accommodation of disability may be available with prior notice. Program information may be available in languages other than English.
University of Kentucky, Kentucky State University, U.S. Department of Agriculture, and Kentucky Counties, Cooperating.
Lexington, KY 40506



Disabilities
accommodated
with prior notification.



AGRICULTURE NIGHT OUT

 **September 30 and October 1, 2025**
5 - 7 PM, free and open to the public



 **Boone County Extension Enrichment Center**
1824 Patrick Drive, Burlington KY 41005

Join us to learn about agriculture in this educational experience for the whole family. Learn how farmers are responsible for food and fiber production while enjoying live music, animals, hay ride and more!

WHAT TO EXPECT:

- **Meet the Animals:** Interact with farm animals and learn about their role in agriculture.
- **Hay ride:** Bask in the fall vibes with a short hay ride around the extension property.
- **Live music:** Hang out with friends, family or make some new acquaintances while enjoying a live performance.

QUESTIONS?

Contact Rusty Wolf at  859.586.6101 or  rusty.wolf@uky.edu



BOONE COUNTY 4-H YOUTH DEVELOPMENT EDUCATION AGENTS

LAILA EL-AMIN
Laila.El-amin@uky.edu

CATHY FELLOWS
Cathy.Fellows@uky.edu

Cooperative Extension Service

Agriculture and Natural Resources
 Family and Consumer Sciences
 4-H Youth Development
 Community and Economic Development

MARTIN-GATTON COLLEGE OF AGRICULTURE, FOOD AND ENVIRONMENT

Educational programs of Kentucky Cooperative Extension serve all people regardless of economic or social status and will not discriminate on the basis of race, color, ethnic origin, national origin, creed, religion, political belief, sex, sexual orientation, gender identity, gender expression, pregnancy, marital status, genetic information, age, veteran status, physical or mental disability or reprisal or retaliation for prior civil rights activity. Reasonable accommodation of disability may be available with prior notice. Program information may be made available in languages other than English. University of Kentucky, Kentucky State University, U.S. Department of Agriculture, and Kentucky Counties, Cooperating. Lexington, KY 40506



Disabilities accommodated with prior notification.